

Capital Campaign Updates

We're proud of the renovations we've completed so far, and excited about what's to come!
Here's a brief overview...



2010 Renovation

Improvements Completed

- Rebuilt Studios 9 through 12, including significantly improved acoustic isolation, and new full lite doors, furniture, paint and carpet
- Replaced 28-year old roof on 1972 building
- Installed new heating, ventilation, and air conditioning units and associated duct work and electrical



Impact

- Vastly improved 4 of 12 teaching studios
- Sound mitigation between adjacent spaces for better student experience
- Avoid costly water damage by replacing the 28 year-old roof
- Improved ventilation, including heat and air conditioning in both teaching & performance space
- New duct work for better air quality
- Improved energy efficiency

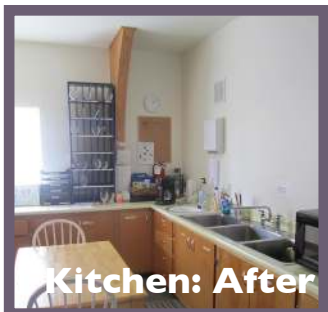


Cost: \$175,000

2011 Renovation

Improvements Completed

- Created a new Student Services office, adjacent to the front door
- Reconfigured 1972 kitchen to provide a new catering kitchen and office space
- Developed electrical improvements plan, and completed priority items
- Completed RMCMA Design Master Plan

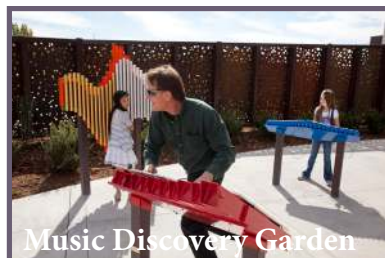


Cost \$60,000

Impact

- Student Services Office adjacent to front door:
 - Friendlier and more welcoming initial experience
 - Improved customer service and access to staff, students and parents
 - Easier navigation within the building for visitors
 - More space to accommodate volunteers
- New catering kitchen:
 - Better use of available space and improves our capacity to generate rental income
 - Allows for "Cabaret" style vending at Kaleidoscope and other concerts and events hosted at RMCMA

2012 Renovation



Improvements Planned

- Grading and drainage around perimeter of 1972 building
- Add windows for natural light in downstairs Family Lounge
- Install new ADA ramp on west side
- Complete porch platform and stairs on west side
- Install new entrance doors and windows on west side
- Remove dilapidated vinyl siding on 1972 building, and replace with stucco exterior
- Paint 1946 building to unify the exterior of the school
- Landscape west side (with community involvement)
- Install Playable Outdoor Instruments in new Music Discovery Garden
- Install solar panels on south-facing roof

Impact

- Eliminate water penetration in the lower level of the 1972 building
- Precursor to additional interior renovation of teaching studios
- Creates handicap accessible main entrance
- Establishes new community gathering space (front porch)
- Creates a Music Discovery Garden for community members of all ages
- Unifies the 1946 and 1972 exteriors
- Identifies the RMCMA as a place for music and community

Cost \$150,000

Expanded Naming Opportunities

- \$750,000 - RMCMA Building
- \$50,000 - Lobby, Including Donor Acknowledgement Wall
- \$30,000 - Music Discovery Garden
- \$20,000 - Terrace (East Side)
- \$20,000 - Student Services Office (Reception & Registration)
- \$15,000 - Student & Family Lounge
- \$10,000 - Each Teaching Studio, 3 of 12 Named
- \$5,000 - Each Outside Musical Instrument in Music Discovery Garden
- \$4,000 - Box Office, Named
- \$2,000 - Drinking Fountain (two)
- \$1,000 - Garden Bench (two)
- \$500 - One Adult Wenger Musician Chair
- \$250 - One Child's Musician Chair
- \$100 - Inscribed Musical Note (throughout the building)

**Thank you for
your support!**

[www.comusic.org/
ways-to-support](http://www.comusic.org/ways-to-support)